

TEL : +91-40-27898206 / 27892071
 FAX : +91-40-27816171
 E-MAIL : infohyd@balajiamines.com
 unit2mktg@balajiamines.com
 WEBSITE : www.balajiamines.com

Balaji



CIN : L24132MH1988PLCO49387

AMINES LTD.

Admn. Off :
 3rd FLOOR, K.P.R. HOUSE, S.P. ROAD,
 SECUNDERABAD - 500 003. (INDIA)

Balaji Amines Limited

(An ISO 9001:2008 Company)

Regd. Office : - "Balaji Towers", No. 9/1A/1, Hotgi Road, Aasara Chowk, Solapur - 413 224

CIN : L24132MH1988PLCO49387

STATEMENT OF STANDALONE AND CONSOLIDATED AUDITED RESULTS FOR THE YEAR AND QUARTER ENDED MARCH 31, 2017

(Rs. In Lakhs)

Sl. No	Particulars	STANDALONE					CONSOLIDATED	
		Quarter ended (31.03.2017)	Quarter ended (31.12.2016)	Quarter ended (31.03.2016)	Year ended (31.03.2017)	Year ended (31.03.2016)	Year ended 31st March 2017	Year ended 31st March 2016
		(Audited)	(Unaudited)	(Audited)	(Audited)	(Audited)	(Audited)	(Audited)
1	Income from operations							
	(a) Income from operations	19314.08	18021.99	17993.52	72730.33	68900.29	73059.15	69820.66
	(b) Other operating income	0.00	0.00	0.00	0.00	0.00	0.00	0.00
	Total income from operations	19314.08	18021.99	17993.52	72730.33	68900.29	73059.15	69820.66
2	Expenses							
	(a) Cost of materials consumed	9285.10	8443.79	7967.82	34594.28	32677.10	34732.58	33053.02
	(b) Changes in inventories of finished goods & work-in-progress	-125.51	-134.97	341.56	-485.25	2208.62	-495.81	2569.32
	(c) Employee benefit expenses	1249.65	967.46	1043.67	3873.34	3152.32	2447.19	3286.26
	(d) Depreciation	474.92	449.05	472.27	1822.07	1789.72	1971.19	1938.22
	(e) Other expenses	5087.13	5087.05	4553.46	19272.51	17972.99	21109.27	18240.05
	Total expenses	15971.29	14812.38	14378.78	59076.95	57800.75	59764.42	59086.87
3	Profit / (Loss) from operations before other income, finance costs and exceptional items (1-2)	3342.79	3209.61	3614.74	13653.38	11099.54	13294.73	10733.79
4	Other income	85.06	59.40	66.67	305.20	224.39	310.08	277.46
5	Profit / (Loss) from ordinary activities before finance costs and exceptional items (3 + 4)	3427.85	3269.01	3681.41	13958.58	11323.93	13604.81	11011.25
6	Finance costs	247.88	271.10	398.13	1168.61	2008.49	1293.65	2215.38



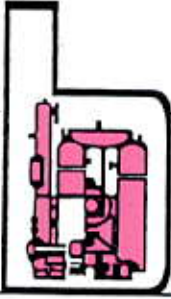
Page 1 of 6

Regd. Office : "Balaji Towers", No. 9/1A/1, Hotgi Road, Aasara Chowk, Solapur - 413 003.

■ Fax : (0217) 2451521, Phones : (0217) 2451523, 2451524, E-mail : info@balajiamines.com

Unit II Works : Beside APSEB Sub Station II, IDA, Bollaram - 502 325, Jinnaram Mandal, Medak Dist. Telangana.

■ Phones : 08458-329660, Telefax : 08458-279240, E-mail : works2@balajiamines.com



TEL : +91-40-27898206 / 27892071
 FAX : +91-40-27816171
 E-MAIL : infohyd@balajiamines.com
 unit2mktg@balajiamines.com
 WEBSITE : www.balajiamines.com

Balaji



CIN : L24132MH1988PLCO49387

AMINES LTD.

Admn. Off :
 3rd FLOOR, K.P.R. HOUSE, S.P. ROAD,
 SECUNDERABAD - 500 003. (INDIA)

7	Profit / (Loss) from ordinary activities after finance costs but before exceptional items (5 - 6)	3179.97	2997.91	3283.28	12789.97	9315.44	12311.16	8795.87
8	Exceptional items *	72.15	23.76	0.00	258.49	0.00	258.42	0.00
9	Profit / (Loss) from ordinary activities before tax (7 + 8)	3252.12	3021.67	3283.28	13048.46	9315.44	12569.58	8795.87
10	Tax expense	1464.87	1058.74	949.72	4491.13	3188.38	4334.41	3034.52
11	Net Profit / (Loss) from ordinary activities after tax (9 - 10)	1787.25	1962.93	2333.56	8557.33	6127.06	8235.17	5761.35
12	Extraordinary items (net of tax expense)	0.00	0.00	0.00	0.00	0.00	0.00	0.00
13	Net Profit / (Loss) for the period (11 + 12)	1787.25	1962.93	2333.56	8557.33	6127.06	8235.17	5761.35
14	Share of Profit / (loss) of associates	-	-	-	-	-	-	-
15	Minority Interest in the loss of subsidiary	-	-	-	-	-	-	-
17	Paid-up equity share capital (Face Value of each Share Rs. 2/-)	648.02	648.02	648.02	648.02	648.02	648.02	648.02
18	Reserve excluding Revaluation Reserves as per balance sheet of previous accounting year	28521.23	28521.23	23124.54	28521.23	23124.54	27372.80	22143.30
19	Earnings per share (Rs.)							
i	Basic and diluted EPS before extraordinary item for the period, for the year to date, and for the previous year (not to be annualised)	5.52	6.05	7.20	26.41	18.91	25.42	17.78
ii	Basic and diluted EPS after extraordinary item for the period, for the year to date, and for the previous year (not to be annualised)	5.52	6.05	7.20	26.41	18.91	25.42	17.78



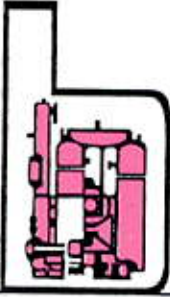
Page 2 of 6

Regd. Office : "Balaji Towers", No. 9/1A/1, Hotgi Road, Aasara Chowk, Solapur - 413 003.

■ Fax : (0217) 2451521, Phones : (0217) 2451523, 2451524, E-mail : info@balajiamines.com

Unit II Works : Beside APSEB Sub Station II, IDA, Bollaram - 502 325, Jinnaram Mandal, Medak Dist. Telangana.

■ Phones : 08458-329660, Telefax : 08458-279240, E-mail : works2@balajiamines.com



TEL : +91-40-27898206 / 27892071
 FAX : +91-40-27816171
 E-MAIL : infohyd@balajiamines.com
 unit2mktg@balajiamines.com
 WEBSITE : www.balajiamines.com

Balaji



CIN : L24132MH1988PLCO49387

AMINES LTD.

Admn. Off :
 3rd FLOOR, K.P.R. HOUSE, S.P. ROAD,
 SECUNDERABAD - 500 003. (INDIA)

Segmentwise Revenue, Results and Capital Employed

(Rs.In Lakhs)

Sl. No	Particulars	STANDALONE					CONSOLIDATED	
		Quarter ended (31.03.2017)	Quarter ended (31.12.2016)	Quarter ended (31.03.2016)	Year ended (31.03.2017)	Year ended (31.03.2016)	Year ended 31st March 2017	Year ended 31st March 2016
		(Audited)	(Unaudited)	(Audited)	(Audited)	(Audited)	(Audited)	(Audited)
1	Segment Revenue							
	Amines Division	18890.62	17593.96	17612.06	71138.13	67419.68	71138.13	67419.68
	Hotel Division	427.59	431.19	384.65	1608.51	1495.43	1608.51	1495.43
	CFL Lamps & Capsules						329.13	920.37
	Sub Total :	19318.21	18025.15	17996.71	72746.64	68915.11	73075.77	69835.48
	Less: Inter-segment revenue	4.13	3.16	3.19	16.31	14.82	16.62	14.82
	Revenue from operations	19314.08	18021.99	17993.52	72730.33	68900.29	73059.15	69820.66
2	Segment Results before Tax & Interest							
	Amines Division	3442.25	3306.66	3709.81	14274.49	11493.94	14274.49	11493.94
	Hotel Division	-14.39	-13.89	-28.40	-129.57	-170.01	-129.57	-170.01
	CFL Lamps & Capsules						-352.98	-312.69
	Total :	3427.86	3292.77	3681.41	14144.92	11323.93	13791.94	11011.24
	Less : Interest							
	Amines Division	207.13	229.50	344.83	996.82	1758.35	996.82	1758.35
	Hotel Division	40.76	41.60	53.30	171.79	250.14	171.79	250.14
	CFL Lamps & Capsules						125.04	206.88
	Total :	247.89	271.10	398.13	1168.61	2008.49	1293.65	2215.37
	Segment Profit/Loss (-) before tax							
	Amines Division	3235.12	3077.16	3364.98	13277.67	9735.59	13277.67	9735.59
	Hotel Division	-55.15	-55.49	-81.70	-301.36	-420.15	-301.36	-420.15

Page 3 of 6

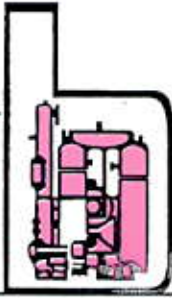
Regd. Office : "Balaji Towers", No. 9/1A/1, Hotgi Road, Aasara Chowk, Solapur - 413 003.

■ Fax : (0217) 2451521, Phones : (0217) 2451523, 2451524, E-mail : info@balajiamines.com

Unit II Works : Beside APSEB Sub Station II, IDA, Bollaram - 502 325, Jinnaram Mandal, Medak Dist. Telangana

■ Phones : 08458-329660, Telefax : 08458-279240, E-mail : works2@balajiamines.com





TEL : +91-40-27898206 / 27892071
 FAX : +91-40-27816171
 E-MAIL : infohyd@balajiamines.com
 unit2mktg@balajiamines.com
 WEBSITE : www.balajiamines.com

Balaji



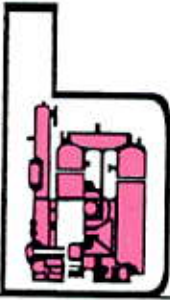
CIN : L24132MH1988PLCO49387

AMINES LTD.

Admn. Off :
 3rd FLOOR, K.P.R. HOUSE, S.P. ROAD,
 SECUNDERABAD - 500 003. (INDIA)

	CFL Lamps & Capsules						-478.02	-519.57
	Total :	3179.97	3021.67	3283.28	12976.31	9315.44	12498.29	8795.87
3	Capital Employed							
a	Segment Assets							
	Amines Division	56609.92	52396.31	51223.18	56609.92	51223.18	56609.92	51223.18
	Hotel Division	8929.01	9092.68	9464.74	8929.01	9464.74	8929.01	9464.74
	BGPL						3748.23	4874.01
	Total :	65538.93	61488.99	60687.92	65538.93	60687.92	69287.16	65561.93
b	Segment Liabilities							
	Amines Division	25924.21	22829.89	28530.19	25924.21	28530.19	25924.21	28530.19
	Hotel Division	2668.07	2725.50	2965.52	2668.07	2965.52	2668.07	2965.52
	BGPL						2152.97	2957.46
	Total :	28592.28	25555.39	31495.71	28592.28	31495.71	33648.68	34453.17





TEL : +91-40-27898206 / 27892071
 FAX : +91-40-27816171
 E-MAIL : infohyd@balajiamines.com
 unit2mktg@balajiamines.com
 WEBSITE : www.balajiamines.com

Balaji



CIN : L24132MH1988PLCO49387

AMINES LTD.

Admn. Off :
 3rd FLOOR, K.P.R. HOUSE, S.P. ROAD,
 SECUNDERABAD - 500 003. (INDIA)

Statement of Assets and Liabilities

(Rs. in Lakhs)

Sl.No.	Particulars	STANDALONE		CONSOLIDATED	
		Year ended (31.03.2017)	Year ended (31.03.2016)	Year ended 31st March 2017	Year ended 31st March 2016
		(Audited)	(Audited)	(Audited)	(Audited)
A	EQUITY AND LIABILITIES				
1	Shareholders' funds				
	(a) Share capital	648.02	648.02	648.02	648.02
	(b) Reserves and surplus	36220.60	28521.23	34740.23	27372.80
	(c) Money received against share warrants				
	Sub-total - Shareholders' funds	36868.62	29169.25	35388.25	28020.82
2	Share application money pending allotment				
3	Minority Interest	-	-	-	-
4	Non-current liabilities				
	(a) Long-term borrowings	1500.67	4458.38	1681.50	4639.22
	(b) Deferred tax liabilities (net)	5826.27	5635.14	5081.59	5047.18
	(c) Other long-term liabilities	582.86	1202.83	582.86	1202.83
	(d) Long-term provisions				
	Sub-total - Non-current liabilities	7909.80	11296.35	7345.95	10889.23
4	Current liabilities				
	(a) Short-term borrowings	6620.75	8948.65	6620.75	10116.62
	(b) Trade payables	6767.36	4777.88	6774.15	4933.68
	(c) Other current liabilities	2214.45	3066.40	2214.45	3073.30
	(d) Short-term provisions	5157.95	3429.39	5157.95	3439.94
	Sub-total - Current liabilities	20760.51	20222.32	20767.30	21563.54
	TOTAL - EQUITY AND LIABILITIES	65538.93	60687.92	63501.50	60473.59
B	ASSETS				
1	Non-current assets				
	(a) Fixed assets	30854.39	32228.96	32548.01	34081.50
	(b) Capital work in progress	2508.34	1626.12	2508.34	1626.12
	(c) Non Current Investments	3015.28	3015.28	1.50	1.50
	(d) Deferred tax assets (net)	-	-	-	-
	(e) Long-term loans and advances	2782.37	1508.36	-	-
	(f) Other non-current assets	245.63	221.47	253.91	231.92
	Sub-total - Non-current assets	39406.01	38600.19	35311.76	35941.04

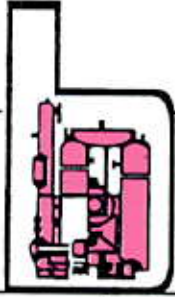


Regd. Office : "Balaji Towers", No. 9/1A/1, Hotgi Road, Aasara Chowk, Solapur - 413 003.

■ Fax : (0217) 2451521, Phones : (0217) 2451523, 2451524, E-mail : info@balajiamines.com

Unit II Works : Beside APSEB Sub Station II, IDA, Bollaram - 502 325, Jinnaram Mandal, Medak Dist. Telangana.

■ Phones : 08458-329660, Telefax : 08458-279240, E-mail : works2@balajiamines.com



TEL : +91-40-27898206 / 27892071
FAX : +91-40-27816171
E-MAIL : infohyd@balajiamines.com
unit2mktg@balajiamines.com
WEBSITE : www.balajiamines.com

Balaji



CIN : L24132MH1988PLCO49387

AMINES LTD.

Admn. Off :
3rd FLOOR, K.P.R. HOUSE, S.P. ROAD,
SECUNDERABAD - 500 003. (INDIA)

2	Current assets				
	(a) Current investments	-	-	-	-
	(b) Inventories	8197.35	5921.20	9898.08	7803.13
	(c) Trade receivables	12179.88	12007.57	12428.78	12434.28
	(d) Cash and cash equivalents	345.45	848.02	349.01	856.82
	(e) Short-term loans and advances	5410.24	3310.94	5513.87	3438.32
	(f) Other current assets	-	-	-	-
	Sub-total - Current assets	26132.92	22087.73	28189.74	24532.55
	TOTAL - ASSETS	65538.93	60687.92	63501.50	60473.59

Notes:

1. The above unaudited results have been reviewed by the audit committee and taken on record by the Board of Directors at their meeting held on 11.05.2017.
2. Segment wise reporting as applicable under AS-17 for the quarter and year ended 31st March 2017, given separately.
3. Income from operations are disclosed inclusive of excise duty as per clarification issued by SEBI Dated 20.09.2016.
4. Corresponding figures in previous period have been regrouped wherever considered necessary.
5. The figures of the last quarter ended 31st March-2017 are balancing figures between audited figures in respect of full financial year and published year to date figures up the third quarter of the current financial year

* Includes profit arising on account of Land acquisition by NHAI Govt. of India.

By order of the Board
For Balaji Amines Limited

Date : 11.05.2017
Place : Secunderabad

A.Prathap Reddy
Chairman and Managing Director



Page 6 of 6

Regd. Office : "Balaji Towers", No. 9/1A/1, Hotgi Road, Aasara Chowk, Solapur - 413 003.

■ Fax : (0217) 2451521, Phones : (0217) 2451523, 2451524, E-mail : info@balajiamines.com

Unit II Works : Beside APSEB Sub Station II, IDA, Bollaram - 502 325, Jinnaram Mandal, Medak Dist. Telangana.

■ Phones : 08458-329660, Telefax : 08458-279240, E-mail : works2@balajiamines.com