

TEL : +91-40-27898206 / 27892071  
 FAX : +91-40-27816171  
 E-MAIL : infohyd@balajiamines.com  
 unit2mktg@balajiamines.com  
 WEBSITE : www.balajiamines.com

# Balaji



**AMINES LTD.**  
 Admn. Off :  
 3rd FLOOR, K.P.R. HOUSE, S.P. ROAD,  
 SECUNDERABAD - 500 003. (INDIA)

BALAJI AMINES LIMITED  
 (An ISO 9001:2008 Company)  
 CIN : L24132MH1988PLC049387

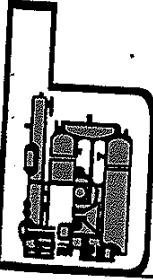
Regd. Office : - "Balaji Towers", 9/1A/1, Hotgi Road Aasara Chowk, SOLAPUR - 413 224  
 UNAUDITED FINANCIAL RESULTS FOR THE QUARTER & NINE MONTHS ENDED DECEMBER 31, 2014

Rs. in Crores

| Particulars   | 3 months ended (31.12.2014) | Preceding 3 months ended (30.09.2014) | Corresponding 3 months ended (31.12.2013) in the previous year | Year to date figures for current period ended (31.12.2014) | Year to date figures for the previous year ended (31.12.2013) | Previous year ended (31.03.2014) |
|---|-----------------------------|---------------------------------------|--|--|---|----------------------------------|
|   | (Unaudited)                 | (Unaudited)                           | (Unaudited)  | (Unaudited)  | (Unaudited)   | (Audited)                        |
| <b>1 Income from operations</b>   |                             |                                       |  |  |   |                                  |
| (a) Net sales/income from operations (Net of excise duty)   | 141.67                      | 150.45                                | 137.51   | 456.59   | 438.63  | 610.13                           |
| (b) Other operating income  | 0.00                        | 0.00                                  | 0.00   | 0.00   | 0.00  | 0.00                             |
| <b>Total income from operations (net)</b>   | <b>141.67</b>               | <b>150.45</b>                         | <b>137.51</b>  | <b>456.59</b>  | <b>438.63</b>   | <b>610.13</b>                    |
| <b>2 Expenses</b>   |                             |                                       |  |  |   |                                  |
| (a) Cost of materials consumed  | 90.00                       | 80.40                                 | 100.15   | 273.68   | 298.97  | 403.42                           |
| (b) Changes in inventories of finished goods & work-in-progress   | -5.50                       | 4.91                                  | -14.51   | -2.67  | -27.15  | -22.45                           |
| (c) Employee benefits expense   | 6.16                        | 5.54                                  | 5.29   | 17.41  | 14.51   | 20.78                            |
| (d) Depreciation  | 4.98                        | 4.93                                  | 4.50   | 14.81  | 12.05   | 16.46                            |
| (e) Other expenses  | 30.69                       | 31.43                                 | 27.14  | 94.72  | 82.41   | 117.36                           |
| <b>Total expenses</b>   | <b>126.32</b>               | <b>127.21</b>                         | <b>122.58</b>  | <b>397.94</b>  | <b>380.79</b>   | <b>535.57</b>                    |
| <b>3 Profit / (Loss) from operations before other income, finance costs and exceptional items (1-2)</b> | <b>15.35</b>                | <b>23.24</b>                          | <b>14.94</b>   | <b>58.65</b>   | <b>57.84</b>  | <b>74.56</b>                     |
| <b>4 Other income</b>   | <b>0.52</b>                 | <b>0.85</b>                           | <b>0.54</b>  | <b>2.15</b>  | <b>2.06</b>   | <b>2.60</b>                      |

Regd. Office : "Balaji Towers", No. 9/1A/1, Hotgi Road, Aasara Chowk, Solapur - 413 003.  
 Fax : (0217) 2451521, Phones : (0217) 2451523, 2451524, E-mail : info@balajiamines.com  
 Unit II Works : Beside APSEB Sub Station II, IDA, Bollaram - 502 325, Jinnaram Mandal, Medak Dist. Telangana.  
 Phones : 08458-329660, Telefax : 08458-279240, E-mail : works2@balajiamines.com





TEL : +91-40-27898206 / 27892071  
FAX : +91-40-27816171  
E-MAIL : infohyd@balajiamines.com  
unit2mktg@balajiamines.com  
WEBSITE : www.balajiamines.com

# Balaji



CIN : L24132MH1988PLCO49387

## AMINES LTD.

Admn. Off :  
3rd FLOOR, K.P.R. HOUSE, S.P. ROAD,  
SECUNDERABAD - 500 003. (INDIA)

|       |   |        |        |        |        |        |        |
|-------|---|--------|--------|--------|--------|--------|--------|
| 5     | Profit / (Loss) from ordinary activities before finance costs and exceptional items (3 + 4)       | 15.87  | 24.09  | 15.48  | 60.80  | 59.90  | 77.16  |
| 6     | Finance costs   | 7.66   | 7.94   | 8.70   | 23.96  | 23.18  | 31.51  |
| 7     | Profit / (Loss) from ordinary activities after finance costs but before exceptional items (5 - 6) | 8.21   | 16.15  | 6.78   | 36.84  | 36.72  | 45.65  |
| 8     | Exceptional items   | 0.00   | 0.00   | 0.00   | 0.00   | 0.00   | 0.00   |
| 9     | Profit / (Loss) from ordinary activities before tax   |        |        |        |        |        |        |
|       | (7 + 8)   | 8.21   | 16.15  | 6.78   | 36.84  | 36.72  | 45.65  |
| 10    | Tax expense   | 2.02   | 5.81   | 2.58   | 12.25  | 12.28  | 12.12  |
| 11    | Net Profit / (Loss) from ordinary activities after tax (9 - 10)                                   | 6.19   | 10.34  | 4.20   | 24.59  | 24.44  | 33.53  |
| 12    | Extraordinary items (net of tax expense)  |        | 1.25   | 0.00   | 0.00   | 0.00   | 0.00   |
| 13    | Net Profit / (Loss) for the period (11 + 12)  | 6.19   | 9.09   | 4.20   | 24.59  | 24.44  | 33.53  |
| 14    | Paid-up equity share capital<br>(Face Value of each Share Rs. 2/-)                                | 6.48   | 6.48   | 6.48   | 6.48   | 6.48   | 6.48   |
| 15    | Reserve excluding Revaluation Reserves as per balance sheet of previous accounting year           | 195.76 | 195.76 | 166.00 | 195.76 | 166.00 | 166.00 |
| 16 i  | Earnings per share (before extraordinary items) (of Rs 2/- each) (not annualised):                |        |        |        |        |        |        |
|       | (a) Basic   | 1.91   | 2.80   | 1.30   | 7.59   | 7.54   | 10.35  |
|       | (b) Diluted   | 1.91   | 2.80   | 1.30   | 7.59   | 7.54   | 10.35  |
| 16 ii | Earnings per share (after extraordinary items) (of Rs 2/- each) (not annualised):                 |        |        |        |        |        |        |
|       | (a) Basic   | 1.91   | 2.80   | 1.30   | 7.59   | 7.54   | 10.35  |
|       | (b) Diluted   | 1.91   | 2.80   | 1.30   | 7.59   | 7.54   | 10.35  |

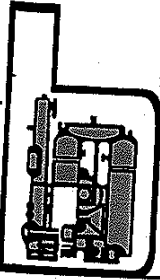
Regd. Office : "Balaji Towers", No. 9/1A/1, Hotgi Road, Aasara Chowk, Solapur - 413 003

■ Fax : (0217) 2451521, Phones : (0217) 2451523, 2451524, E-mail : info@balajiamines.com

Unit II Works : Beside APSEB Sub Station II, IDA, Bollaram - 502 325, Jinnaram Mandal, Medak Dist. Telangana

■ Phones : 08458-329660, Telefax : 08458-279240, E-mail : works2@balajiamines.com





TEL : +91-40-27898206 / 27892071  
 FAX : +91-40-27816171  
 E-MAIL : infohyd@balajiamines.com  
 unit2mktg@balajiamines.com  
 WEBSITE : www.balajiamines.com

# Balaji



CIN : L24132MH1988PLCO49387

## AMINES LTD.

Admn. Off :  
 3rd FLOOR, K.P.R. HOUSE, S.P. ROAD,  
 SECUNDERABAD - 500 003. (INDIA)

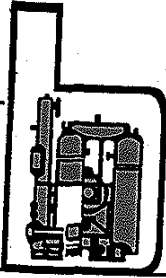
**PART II SELECTED INFORMATION FOR THE QUARTER AND NINE MONTHS ENDED 31<sup>ST</sup> DECEMBER 2014**

|           | 3 Months ended   | Preceding 3 Months ended | Corresponding 3 months ended in the previous year | Year to date figures for current period ended | Year to date figures for the previous year ended | Previous Financial Year |
|-----------|--|--------------------------|---|---|--|-------------------------|
|           | 31.12.2014   | 30.09.2014               | 31.12.2013  | 31.12.2014                                    | 31.12.2013                                       | 31.03.2014              |
| <b>A</b>  | <b>PARTICULARS OF SHAREHOLDING</b>   |                          |   |   |  |                         |
| <b>1</b>  | <b>Public shareholding</b>   |                          |   |   |  |                         |
|           | - Number of shares   | 14794918                 | 14794918  | 14794918                                      | 14794918   | 14794918                |
|           | - Percentage of shareholding   | 45.66                    | 45.66   | 45.66   | 45.66  | 45.66                   |
| <b>2</b>  | <b>Promoters and Promoter Group Shareholding **</b>  |                          |   |   |  |                         |
| <b>a)</b> | <b>Pledged / Encumbered</b>  |                          |   |   |  |                         |
|           | Number of shares   | 6732000                  | 6732000   | 6732000                                       | 6732000  | 6732000                 |
|           | Percentage of shares (as a % of the total shareholding of promoter and promoter group)     | 38.24                    | 38.24   | 38.24   | 38.24  | 38.24                   |
|           | Percentage of shares (as a % of the total share capital of the company)                    | 20.78                    | 20.78   | 20.78   | 20.78  | 20.78                   |
| <b>b)</b> | <b>Non - encumbered</b>  |                          |   |   |  |                         |
|           | Number of shares   | 10874082                 | 10874082  | 10874082                                      | 10874082   | 10874082                |
|           | Percentage of shares (as a % of the total shareholding of the Promoter and Promoter group) | 61.76                    | 61.76   | 61.76   | 61.76  | 61.76                   |
|           | Percentage of shares (as a % of the total share capital of the company)                    | 33.56                    | 33.56   | 33.56   | 33.56  | 33.56                   |

| Particulars | 3 months ended 31.12.2014                      |     |
|-------------|--|-----|
| <b>B</b>    | <b>INVESTOR COMPLAINTS</b>                     |     |
|             | Pending at the beginning of the quarter        | Nil |
|             | Received during the quarter                    | 1   |
|             | Disposed of during the quarter                 | 1   |
|             | Remaining unresolved at the end of the quarter | Nil |



Regd. Office : "Balaji Towers", No. 9/1A/1, Hotgi Road, Aasara Chowk, Solapur - 413 005  
 ■ Fax : (0217) 2451521, Phones : (0217) 2451523, 2451524, E-mail : info@balajiamines.com  
 Unit II Works : Beside APSEB Sub Station II, IDA, Bollaram - 502 325, Jinnaram Mandal, Medak Dist. Telangana  
 ■ Phones : 08458-329660, Telefax : 08458-279240, E-mail : works2@balajiamines.com



TEL : +91-40-27898206 / 27892071  
 FAX : +91-40-27816171  
 E-MAIL : infohyd@balajiamines.com  
 unit2mktg@balajiamines.com  
 WEBSITE : www.balajiamines.com

# Balaji



CIN : L24132MH1988PLCO49387

## AMINES LTD.

Admn. Off :  
 3rd FLOOR, K.P.R. HOUSE, S.P. ROAD,  
 SECUNDERABAD - 500 003. (INDIA)

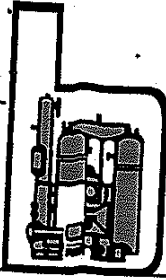
Balaji Amines Limited  
 Segment Information

(Rs. In Crores)

| Sl. No. | Particulars   | 3 months ended (31.12.2014) | Preceding 3 months ended (30.09.2014) | Year to date figures for current period ended (31.12.2014) | Year to date figures for current period ended (31.12.2013) | Previous Financial Year Ended 31.03.2014 |
|---------|---|-----------------------------|---------------------------------------|--|--|--|
|         |   | (Unaudited)                 | (Unaudited)                           | (Unaudited)  | (Unaudited)  | (Audited)                                |
| 1       | Segment Revenue                                     |                             |                                       |  |  |  |
|         | Amines Division                                     | 138.88                      | 148.03                                | 448.90   | 437.07   | 606.18                                   |
|         | Hotel Division                                      | 2.87                        | 2.44                                  | 7.83   | 1.59   | 4.01                                     |
|         | Sub Total :   | 141.75                      | 150.47                                | 456.73   | 438.66   | 610.19                                   |
|         | Less: Inter-segment revenue                         | 0.08                        | 0.02                                  | 0.14   | 0.03   | 0.06                                     |
|         | Net revenue from operations                         | 141.67                      | 150.45                                | 456.59   | 438.63   | 610.13                                   |
| 2       | Segment Results before Depreciation, Interest & Tax |                             |                                       |  |  |  |
|         | Amines Division                                     | 20.19                       | 28.87                                 | 74.84  | 71.88  | 93.43                                    |
|         | Hotel Division                                      | 0.66                        | 0.15                                  | 0.77   | 0.07   | 0.18                                     |
|         | Total :   | 20.85                       | 29.02                                 | 75.61  | 71.95  | 93.61                                    |
| 3       | Depreciation  |                             |                                       |  |  |  |
|         | Amines Division                                     | 3.92                        | 3.88                                  | 11.66  | 11.42  | 14.74                                    |
|         | Hotel Division                                      | 1.06                        | 1.05                                  | 3.15   | 0.63   | 1.72                                     |
|         | Total :   | 4.98                        | 4.93                                  | 14.81  | 12.05  | 16.46                                    |
| 4       | Interest  |                             |                                       |  |  |  |
|         | Amines Division                                     | 6.78                        | 7.01                                  | 21.19  | 22.51  | 29.85                                    |
|         | Hotel Division                                      | 0.88                        | 0.93                                  | 2.77   | 0.67   | 1.66                                     |
|         | Total :   | 7.66                        | 7.94                                  | 23.96  | 23.18  | 31.51                                    |
| 5       | Segment Profit/Loss (-) before tax                  |                             |                                       |  |  |  |
|         | Amines Division                                     | 9.48                        | 17.99                                 | 41.99  | 37.95  | 48.84                                    |
|         | Hotel Division                                      | -1.27                       | -1.84                                 | -5.15  | -1.23  | -3.20                                    |
|         | Total :   | 8.21                        | 16.15                                 | 36.84  | 36.72  | 45.64                                    |
| 6       | Tax Expenses  |                             |                                       |  |  |  |
|         | Amines Division                                     | 0.64                        | 3.25                                  | 7.27   | 8.94   | 12.12                                    |
|         | Hotel Division                                      | 1.38                        | 3.81                                  | 4.98   | 3.33   | 0.00                                     |
| 7       | Profit/Loss (-) after tax                           | 6.19                        | 9.09                                  | 24.59  | 24.45  | 33.52                                    |



Regd. Office : "Balaji Towers", No. 9/1A/1, Hotgi Road, Aasara Chowk, Solapur - 413 003.  
 ■ Fax : (0217) 2451521, Phones : (0217) 2451523, 2451524, E-mail : info@balajiamines.com  
 Unit II Works : Beside APSEB Sub Station II, IDA, Bollaram - 502 325, Jinnaram Mandal, Medak Dist. Telangana.  
 ■ Phones : 08458-329660, Telefax : 08458-279240, E-mail : works2@balajiamines.com



TEL : +91-40-27898206 / 27892071  
FAX : +91-40-27816171  
E-MAIL : infohyd@balajiamines.com  
unit2mktg@balajiamines.com  
WEBSITE : www.balajiamines.com

# Balaji



CIN : L24132MH1986PLCO49387

## AMINES LTD.

Admn. Off :  
3rd FLOOR, K.P.R. HOUSE, S.P. ROAD,  
SECUNDERABAD - 500 003. (INDIA)

|    |   |        |        |        |        |        |
|----|---|--------|--------|--------|--------|--------|
| 8  | Segment Assets                          |        |        |        |        |        |
|    | Amines Division                         | 537.93 | 501.85 | 537.93 | 479.94 | 516.22 |
|    | Hotel Division                          | 103.86 | 104.13 | 103.86 | 103.62 | 105.13 |
|    | Total :                                 | 641.80 | 605.98 | 641.80 | 583.56 | 621.35 |
| 9  | Segment Liabilities                     |        |        |        |        |        |
|    | Amines Division                         | 367.42 | 338.36 | 367.42 | 353.97 | 385.99 |
|    | Hotel Division                          | 46.23  | 46.00  | 46.23  | 32.99  | 33.12  |
|    | Total :                                 | 413.65 | 384.36 | 413.65 | 386.96 | 419.11 |
| 10 | Segment Assets acquired during the year |        |        |        |        |        |
|    | Amines Division                         | 0.80   | 0.40   | 5.54   | 9.94   | 5.79   |
|    | Hotel Division                          | 0.38   | 0.30   | 1.08   | 103.62 | 102.03 |
|    | Total :                                 | 1.18   | 0.70   | 6.62   | 113.56 | 107.82 |
| 11 | Capital Work in Progress                |        |        |        |        |        |
|    | Amines Division                         | 8.55   | 8.43   | 8.55   | 2.55   | 8.12   |
|    | Total :                                 | 8.55   | 8.43   | 8.55   | 2.55   | 8.12   |

### Notes:

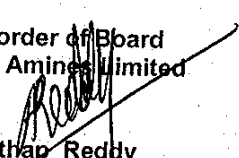
1. The above unaudited results have been reviewed by the audit committee and taken on record by the Board of Directors at their meeting held on 14-02-2015.
2. The Limited Review by the Statutory Auditors for the quarter and Nine months as required under clause 41 of the Listing Agreement has been completed and the related Report is being forwarded to stock Exchanges.
3. Corresponding figures in previous year have been regrouped wherever considered necessary.
4. Segment wise reporting as applicable under AS-17 for the quarter and Nine months ended 31<sup>st</sup> December 2014, given separately.

\*The Shares are pledged in favour of Banks to Secure various credit facilities to the company

Date: 14/02/2015

Place : Secunderabad

By order of Board  
for Balaji Amines Limited

  
A Prathap Reddy  
Chairman & Managing Director

Regd. Office : "Balaji Towers", No. 9/1A/1, Hotgi Road, Aasara Chowk, Solapur - 413 003.

■ Fax : (0217) 2451521, Phones : (0217) 2451523, 2451524, E-mail : info@balajiamines.com

Unit II Works : Beside APSEB Sub Station II, IDA, Bollaram - 502 325, Jinnaram Mandal, Medak Dist. Telangana.

■ Phones : 08458-329660, Telefax : 08458-279240, E-mail : works2@balajiamines.com